

CSP PASSPORT®

CSP PassPort is a comprehensive security product for controlling and auditing user access to HPE NonStop Servers. It offers superior user authentication, command control, session control, accountability, and auditing capabilities not available with Guardian or Safeguard security.

Key Features

- ▶ Powerful User Access and Command Control solution
- ▶ Complete session control
- ▶ Key stroke level auditing
- ▶ Extensive reporting
- ▶ Multilevel security administration (master and backup admin)
- ▶ Define and restrict user activity with highly configurable user aliases and group profiles
- ▶ Does not require Safeguard
- ▶ Run commands with alternate ID's
- ▶ Restrict GUI functions using PPMenu
- ▶ Time restrictions by command and program
- ▶ Stop or suspend a user's session activity
- ▶ Log terminal interactions
- ▶ Includes tools like NetPass for password management and Spoolview for Spooler job management
- ▶ Quick and easy installation





Learn more

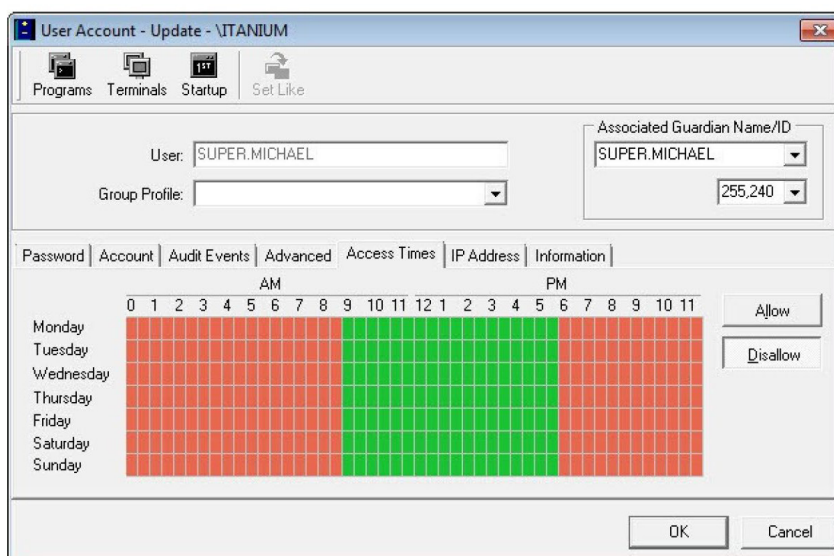
Learn more about how enterprise data protection can benefit your organization here or contact us to discuss your data protection requirements: www.comforte.com.

Follow us on social media:



What benefits does it provide?

- ▶ Limit user access to NonStop servers and audit activities
- ▶ Provide access to resources/functions as required
- ▶ Control access to sensitive assets, programs and commands
- ▶ Improve user accountability
- ▶ Track powerful user id's and commands (super users, shared ID's)
- ▶ Enforce Password Quality to prevent easy hacks
- ▶ Generate extensive reports of user activities
- ▶ Address PCI and other compliance requirement



PCI and CSP PassPort

PassPort helps address key PCI requirements:

- ▶ Req. 7 - Restrict access to cardholder data by business need-to-know (least privilege access)
- ▶ Req. 8 - Identify and authenticate access to system components (assign unique ID's and strong passwords)
- ▶ Req. 10 - Track and monitor all access to network resources and cardholder data